

# An observational assessment of AMH as a predictive marker of ovarian response in assisted reproductive technology outcome

<sup>1</sup>Dr. Akila Sree Gowri, <sup>2</sup>Dr. R Swapna

<sup>1,2</sup>Associate Professor, Department of Obstetrics & Gynecology, RVM Institute of Medical Sciences and Research Centre, Siddipet, Telangana, India

## Corresponding Author:

Dr. R Swapna ([rvims.ri@gmail.com](mailto:rvims.ri@gmail.com))

## Abstract

**Objective:** To evaluate AMH as a predictive marker of ovarian response in assisted reproductive technology outcome.

**Methods:** 70 women (age 25-40 years) selected for *in vitro* fertilization treatment were included in this study. Analysis of day-2 serum samples was done for the AMH, FSH, Inhibin B, and LH by ELISA kit methods. USG was done for the antral follicle count (AFC) and oocytes' retrieval.

**Results:** The mean AMH levels of all treated patients were  $2.260 \pm 0.417$ . ROC for AMH indicating poor ovarian response with sensitivity of 72% and specificity of 70%. A statistically significant positive correlation was observed between the number of oocytes retrieved and the AMH ( $r = 0.620$ ,  $p = 0.0001$ ) (Fig. 2). Significant correlation was also seen between the number of oocytes retrieved and AFC ( $r = 0.400$ ,  $p = 0.0001$ ).

**Conclusion:** Our data demonstrated that AMH is an adequate predictor of both high and poor ovarian response but it does not associate with pregnancy outcomes.

**Keywords:** Anti-Mullerian hormone, antral follicle count, oocytes retrieval count, assisted reproductive technology (ART)

## Introduction

Predicting ovarian response properly and customizing therapy based on patient features and biomarkers are critical to the successful use of controlled ovarian stimulation (COS) in *in vitro* fertilisation (IVF). Clinicians often take into account factors including a woman's age, BMI, menstrual cycle length, and past IVF success when deciding on an ovarian stimulation strategy <sup>[1]</sup>. The number of accessible primordial follicles, as well as the quality of the oocytes, have also been postulated as indicators of ovarian response, with variable degrees of success, in the past <sup>[2, 3]</sup>. Of these, biochemical measures, such as basal follicle-stimulating hormone (FSH), estradiol (E2) and inhibin concentrations, fluctuate substantially during the menstrual cycle and hence their use has been limited <sup>[4, 5]</sup>. Ovarian imaging, particularly antral follicle count (AFC), is largely affected by sonographers' intra- and inter-observer reproducibility and its sensitivity may differ from the resolution of transvaginal ultrasonography equipment <sup>[2, 6]</sup>.

The ovarian reserve, constituted by the size of the ovarian follicle pool and the quality of oocytes therein, declines with increasing age, resulting in the decrease of women's reproductive function <sup>[7]</sup>. Diminished ovarian reserve has been recognized as an increasingly important cause of infertility. With age, ovarian reserve declines principally due to apoptotic loss of primordial follicles and not due to ovulation <sup>[8]</sup>.

The only effective treatment for decreased ovarian reserve is early attempt at pregnancy; and therefore, identification of accurate predictors of ovarian reserve is a must <sup>[9]</sup>.

So far, assessment of the number of antral follicle count (AFC) by ultrasonography best predicts the quantitative aspect of ovarian reserve <sup>[9]</sup>. With the decline of the follicle pool, serum levels of Inhibin B and E2 decrease and subsequently serum FSH levels rise. These factors are part of a feedback system as their serum levels are not independent of each other. Furthermore, changes in serum levels of FSH, Inhibin B, and E2 occur relatively late in the reproductive aging process when reduction in ovarian reserve is critical and chances of pregnancy are significantly reduced <sup>[10]</sup>. Age, day-3 FSH, Inhibin B, AFC, ovarian volume, and several dynamic tests have been correlated with ovarian response in ART. However, their predictive value remains controversial and disappointing <sup>[11]</sup>.

Anti-Mullerian hormone, a member of the transforming growth factor- $\beta$  family, is essentially involved in the regression of Mullerian ducts in the male fetus, the initial step of organogenesis of the male genital tract. In females, it is a product of the granulosa cells from pre-antral and small antral follicles. It has direct or indirect roles in various phases of folliculogenesis from the primordial to the FSH-sensitive follicular stages, probably via AMH II receptors, expressed in granulosa theca cells. Therefore, AMH secretion might reflect the activity of pre-antral and early antral follicles, making it a promising marker in the evaluation of ovarian follicular reserve <sup>[12]</sup>.

Hence, the objective of this study is to measure the levels of early follicular phase Anti-Mullerian hormone (AMH) in patients of IVF to evaluate the AMH as a predictive marker of ovarian response in assisted reproductive technology outcome.

## Methods

This study included 70 women (age 25–40 years) attending infertility clinic at the department of Obstetrics and Gynecology, RVM Institute of Medical Sciences and Research Centre, Siddipet, Telangana, India for 1 year. After diagnosis of infertility these patients were referred to a private IVF center and their response were measured and analyzed.

## Inclusion criteria

1. Regular menstrual cycle
2. Presence of both ovaries
3. Age <42 years.

## Exclusion criteria

1. Women with genital tuberculosis, endometriosis, and autoimmune disorders were excluded from the study.
2. Endocrine Disorders

## Hormone measurement

Serum AMH was measured by EIA AMH/MIH kit (A Beckman Coulter Company) following the manufacturer's protocol. Serum Inhibin levels were determined by the sandwich ELISA

technique using the INHIBIN B DSL-10-84100i kit following the manufacture's protocol. Serum FSH levels were determined by the immune enzymometric assay ELISA technique using the EIAGEN.

### Long GnRH agonist protocol

GnRH agonists are started in the mid-luteal phase of the cycle preceding the planned IVF, leading to both pituitary and ovarian desensitization. Following this, ovarian stimulation with gonadotropins are started and GnRH agonist injection is continued until HCG is administered. This is the most widely used method.

### Antagonist protocol

GnRH antagonists like Cetrorelix or Ganirelix are given either as a single bolus dose of Cetrorelix 3 mg or in multiple doses of 0.25 mg daily. Next, HCG is given to trigger ovulation. Ovum pick-up is done after 34–36 h and inseminated with washed and processed sperms.

### Results

Linear discriminant analysis was done to know the correlation of the AMH with poor ovarian response, and the AMH cut-off level for poor ovarian response was 1.8 ng/ml with the least false positive and false negative results. Seventy patients were included with the aim of having their first IVF attempt. The baseline characteristics of poor and good responder groups are shown in Table 1. The mean AMH levels of all treated patients were  $2.260 \pm 0.417$ .

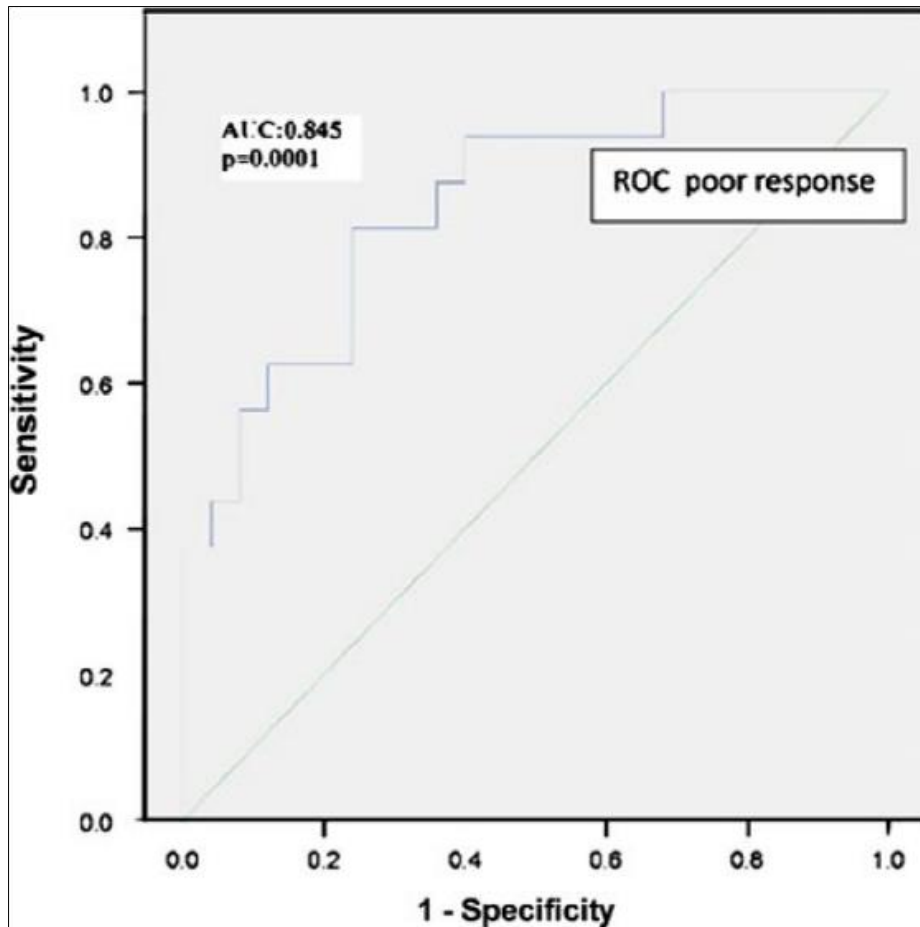
Figure 1 shows the typical ROC for the AMH indicating poor ovarian response with sensitivity of 72% and specificity of 70%. The patients who responded poorly were older and had less oocyte retrieved with lower AMH than normal responders. ROC curve analysis for poor response showed that the AMH had the largest area under the curve (AUC; 0.812;  $p = 0.0001$ ) as compared to the FSH (AUC; 0.525  $p = 0.04$ ), age (AUC; 0.401;  $p = 0.05$ ).

The negative correlation was seen between the Oocyte retrieval count and FSH, though less significant ( $r = -0.481$ ,  $p = 0.01$ ). No correlation was identified between number of retrieved oocytes and Inhibin B. The AFC and AMH also showed a significant correlation ( $r = 0.481$ ,  $p = 0.020$ ). A statistically significant positive correlation was observed between the number of oocytes retrieved and the AMH ( $r = 0.620$ ,  $p = 0.0001$ ) (Fig. 2). Significant correlation was also seen between the number of oocytes retrieved and AFC ( $r = 0.400$ ,  $p = 0.0001$ ).

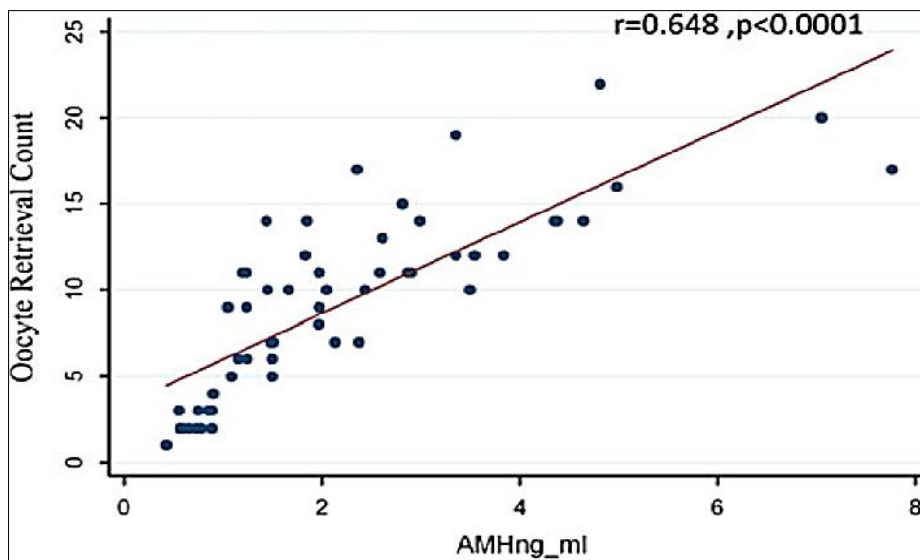
**Table 1:** Baseline characteristics and IVF cycle outcome

	Good responders (C8 oocytes)	Poor Responders (B4 oocytes)
Number of patients	52	18
Age (in years)	$31.4 \pm 4.7$	$38.1 \pm 6.3$
Infertility duration (years)	<10	>15
FSH (IU/l)	$4.31 \pm 1.63$	$9.20 \pm 1.18$
AMH (ng/ml)	$1.278 \pm 1.18$	$0.329 \pm 0.48$
Inhibin B (pg/ml)	$71.82 \pm 8.98$	$53.1 \pm 4.1$
LH (IU/l)	$5.2 \pm 0.20$	$4.0 \pm 3.8$
Oocytes retrieved	$12.3 \pm 7.1$	$2.8 \pm 1.03$
AFC	$15.8 \pm 6.1$	$11.3 \pm 5.1$

Values are represented as median range. Student's t test is performed to compare good and poor responders. Number of patients is 52 in the good responder group (five cancellations due to high response)



**Fig 1:** Receiver operating characteristic curve for AMH as an indicator of poor ovarian reserve and oocytes' retrieval



**Fig 2:** Correlation of number of oocytes after ovum retrieval with AMH in IVF patients. r is Spearman's correlation coefficient followed by the p value

**Discussion**

The study evaluates the relationship between serum AMH levels, measured by an ultrasensitive ELISA technique, and the oocytes retrieved after gonadotropins' stimulation in

IVF patients and compares the strength of correlations between the various hormonal parameters in predicting the positive outcome of IVF.

Markers of ovarian reserve exhibit comparable predictive value for ovarian response in protocol, in accordance with previous studies indicating that early-follicular phase AFC and AMH have similar correlations to the number of oocytes retrieved [13]. Direct comparisons of AFC and AMH in ovarian response prediction have generally shown no significant difference, while a few studies demonstrated that AMH or AFC had stronger predictive value than the other [13].

Previous cohort studies have shown that AMH-tailored stimulation strategies resulted in a decreased incidence of high and poor response, increased pregnancy and live birth rates, as well as a reduction in costs [14, 15]. These findings, however, are challenged by two recent RCTs to some extent [16, 17].

While AMH is a predictor of oocyte yield after COS, the literature shows no evidence of AMH being a valid predictor of the chance of achieving pregnancy after COS. Female age is the most accurate predictor for ongoing pregnancy after IVF [18].

A meta-analysis including 5764 women with unknown ovarian reserve undergoing IVF explores the association between AMH and live births. They concluded that the ability to predict live birth based on AMH is poor as they find a sensitivity of 83.7% (95% CI 72.5-90.9%) and a specificity of 32.0% (95% CI 21.6-44.6%). In a study based on 749 good-prognosis patients using both fresh and cryopreserved oocytes, an association between AMH level and cumulative pregnancy rate and live birth rate is found; however, the authors conclude that the association is due to a higher oocyte yield and not a better oocyte quality [19].

Women with low AMH levels are at risk of poor ovarian response and therefore higher doses of gonadotropins are typically applied trying to maximize follicular recruitment and oocyte yield. In contrast, in women with high AMH levels, a milder stimulation protocol with lower doses of gonadotropins are often used to reduce the OHSS risk [20].

Ovarian response to COS can be defined as the number of growing follicles exceeding 10 mm or more or by the number of oocytes retrieved and is dependent on the ovarian reserve, the gonadotropin stimulation dose and the stimulation protocol. The stimulation protocol is chosen according to ovarian reserve markers combined with the woman's age, body mass index and ovarian response to previous IVF attempts [21]. As there is variability in ovarian response to a given dose of gonadotropins, clinicians have tried to identify markers that can predict the ovarian response. The best markers to determine ovarian reserve are AFC and AMH, and both have been shown to predict the ovarian response to COS too [22].

Poor ovarian response to COS is seen in 10–20% of patients in ART treatment, with increasing prevalence among older women and reaching 50% in the group of women aged 43–44 years [23, 24].

The Anti-Müllerian hormone can also be a promising marker for the detection of OHSS. Our study shows an elevation of the AMH in the hyper-responders as compared to good responders, although due to the small size, it did not meet statistical significance.

## Conclusion

AFC and AMH tests, which predict the ovarian response to COS, may be used to assess a woman's ovarian reserve before to undergoing fertility therapy. This aids doctors in determining the best treatment plan and in preparing women for therapy with realistic expectations. There is a strong correlation between AMH and the amount of eggs harvested, and this is a reliable predictor of ART failure.

## References

1. La Marca A, Sunkara SK. Individualization of controlled ovarian stimulation in IVF using ovarian reserve markers: from theory to practice. *Hum Reprod Update*. 2014;20:124-40.
2. La Marca A, Argento C, Sighinolfi G, Grisendi V, Carbone M, D'Ippolito G, *et al*. Possibilities and limits of ovarian reserve testing in ART. *Curr Pharm Biotechnol*. 2012;13:398-408.
3. Practice Committee of the American Society for Reproductive Medicine. Testing and interpreting measures of ovarian reserve: a committee opinion. *Fertil Steril*. 2015;103:e9-e17.
4. Tsepelidis S, Devreker F, Demeestere I, Flahaut A, Gervy C, Englert Y. Stable serum levels of anti-Mullerian hormone during the menstrual cycle: a prospective study in normo-ovulatory women. *Hum Reprod*. 2007;22:18-37.
5. Dewailly D, Andersen CY, Balen A, Broekmans F, Dilaver N, Fanchin R, *et al*. The physiology and clinical utility of anti-Mullerian hormone in women. *Hum Reprod Update*. 2014;20:370-85.
6. Fleming R, Seifer DB, Frattarelli JL, Ruman J. Assessing ovarian response: antral follicle count versus anti-Mullerian hormone. *Reprod Biomed Online*. 2015;31:486-96.
7. Visser JA, de Jong FH, Laven JSE, *et al*. Anti-Mullerian hormone: a new marker for ovarian function. *Reproduction*. 2006;131(1):1-9.
8. Tremellen KP, Kolo M, Gilmore A, *et al*. Anti-mullerian hormone as a marker of ovarian reserve. *Aust N Z J Obstet Gynaecol*. 2005;45(1):20-4.
9. Singh Neeta, Malik Ekta, Banerjee Ayan, Chosdol Kunzang, Sreenivas V, Mittal Suneeta. Anti-Mullerian Hormone: Marker for Ovarian Response in Controlled Ovarian Stimulation for IVF Patients: A First Pilot Study in the Indian Population. *The Journal of Obstetrics and Gynecology of India*. 2013 July-Aug;63(4):268-272.
10. Burger HG, Dudley EC, Hopper JL, *et al*. Prospectively measured levels of serum follicle-stimulating hormone, estradiol, and the dimeric inhibins during the menopausal transition in a population based cohort of women. *J Clin Endocrinol Metab*. 1999;84(11):4025-30.
11. Bancsi LF, Broekmans FJ, Eijkemans MJ, *et al*. Predictors of poor ovarian response in *in vitro* fertilization: a prospective study comparing basal markers of ovarian reserve. *Fertil Steril*. 2002;77(2):328-36.
12. Baarends WM, Hoogerbrugge JW, Post M, *et al*. Anti-mullerian hormone and anti-mullerian hormone type II receptor messenger ribonucleic acid expression during postnatal testis development and in the adult testis of the rat. *Endocrinology*. 1995;136(12):5614-22.
13. Broer SL, Dolleman M, Opmeer BC, Fauser BC, Mol BW, Broekmans FJ. AMH and AFC as predictors of excessive response in controlled ovarian hyperstimulation: a meta-analysis. *Hum Reprod Update*. 2011;17:46-54.
14. Nelson SM, Yates RW, Lyall H, Jamieson M, Traynor I, Gaudoin M, *et al*. Anti-Mullerian hormone-based approach to controlled ovarian stimulation for assisted conception. *Hum Reprod*. 2009;24:867-75.
15. Yates AP, Rustamov O, Roberts SA, Lim HY, Pemberton PW, Smith A, *et al*. Anti-Mullerian hormone-tailored stimulation protocols improve outcomes whilst reducing adverse effects and costs of IVF. *Hum Reprod*. 2011;26:2353-62.
16. Allegra A, Marino A, Volpes A, Coffaro F, Scaglione P, Gullo S, *et al*. A randomized controlled trial investigating the use of a predictive nomogram for the selection of the FSH starting dose in IVF/ICSI cycles. *Reprod Biomed*.
17. Nyboe Andersen A, Nelson SM, Fauser BC, Garcia-Velasco JA, Klein BM, Arce JC. Individualized versus conventional ovarian stimulation for *in vitro* fertilization: a multicenter, randomized, controlled, assessor blinded, phase 3 non-inferiority trial. *Fertil*

- Steril. 2017;107:387-96.e4.
18. Broer SL, van Disseldorp J, Broeze KA, Dolleman M, Opmeer BC, Bossuyt P, *et al.* Added value of ovarian reserve testing on patient characteristics in the prediction of ovarian response and ongoing pregnancy: an individual patient data approach. *Hum Reprod Update.* 2013;19:26-36.
  19. Arce JC, La Marca A, Mirner Klein B, Nyboe Andersen A, Fleming R. Anti-Mullerian hormone in gonadotropin releasing-hormone antagonist cycles: prediction of ovarian response and cumulative treatment outcome in good prognosis patients. *Fertil Steril.* 2013;99:1644-53.
  20. Tarlatzi TB, Venetis CA, Devreker F, Englert Y, Delbaere A. What is the best predictor of severe ovarian hyper stimulation syndrome in IVF? A cohort study. *J Assist Reprod Genet.* 2017;34:1341-51.
  21. Fleming R, Seifer DB, Frattarelli JL, Ruman J. Assessing ovarian response: antral follicle count versus anti-Mullerian hormone. *Reprod Biomed Online.* 2015;31:486-96.
  22. La Marca A, Sunkara SK. Individualization of controlled ovarian stimulation in IVF using ovarian reserve markers: from theory to practice. *Hum Reprod Update.* 2014;20:124-40.
  23. Broer SL, van Disseldorp J, Broeze KA, Dolleman M, Opmeer BC, Bossuyt P, *et al.* Added value of ovarian reserve testing on patient characteristics in the prediction of ovarian response and ongoing pregnancy: an individual patient data approach. *Hum Reprod Update.* 2013;19:26-36.
  24. Ferraretti AP, La Marca A, Fauser BC, Tarlatzis B, Nargund G, Gianaroli L. ESHRE consensus on the definition of 'poor response' to ovarian stimulation for *in vitro* fertilization: the Bologna criteria. *Hum Reprod.* 2011;26:1616-24.