

EVALUATING THE EFFECTIVENESS OF ANTIPLATELET THERAPY OF THE PATIENTS WITH KIDNEY DISEASE

Nodir N. Sultonov, Department Assistant and Hospital № 2, Tashkent Medical Academy, the Republic of Uzbekistan, E-mail: dr_nodir86@mail.ru

Maksud O. Sabirov, Tashkent State Dental institute, the Republic of Uzbekistan, E-mail: maksud1975@mail.ru

Mahsuma H. Tashpulatova, Tashkent Medical Academy, the Republic of Uzbekistan, E-mail: tashpulatovamaxsumaxon@gmail.com

Lola I. Maksudova, Tashkent Pediatric Medical Institute, the Republic of Uzbekistan, E-mail: ssht61@mail.ru

Abstract: *The study has evaluated the effectiveness of antiplatelet therapy of the patients with chronic kidney disease. The patients were divided into two groups when treating the disease, the first group was given allthrombeseptin as antiplatelet therapy, and the second group was given dipyridamole. The research work was monitored for 10 days, during which the amount of urea in the blood was 9.6% compared to healthy people and a decrease in the amount of creatinine to 7.52%. Aggregation of thrombocytes was observed in the first group by 10.23% and 9.6% was in the second group. As can be seen from the results obtained, it has been proved that dipyridamole did not lag behind in effectiveness, which was taken from the factory as an antiplatelet therapy and was used with the locally developed allthrombeseptin, as a traditional treatment, while treating chronic kidney disease (CKD).*

Keywords: *chronic kidney disease, antiplatelet therapy, allthrombeseptin, dipyridamole.*

Relevance: The experts of the Kidney Disease Outcomes Quality Initiative (K/DOQI) of the National Kidney Foundation of the United States define chronic kidney disease (CKD) as kidney damage or decreased level of kidney function for at least 3 months regardless of etiology, and it is the most acute medical and social problem related to the priorities of national health systems of all industrialized countries in the world where there has been a steady increase in the prevalence of chronic kidney failure (CKF) in recent decades associated with reduced quality of life of patients and high fatality rate [3,7, 14, 17,25].

The prevalence of CKD in the world is also difficult to assess, since different criteria and assessment methods have been used. The prevalence of CKD in Romania (60,969 people aged 18 years and older were surveyed) is 7%, in the United States among the population aged 20 years and older — 12%. [2,9,10,22]. Higher figures are also given, in particular for the United States, which largely depends on the assessment methodology [6, 19,11,26].

Overall, probably about 10% of the world's adult population has CKD. In patients with arterial hypertension, the prevalence of CKD is significantly higher and is 27.5% [4, 13,18,23].

At least 10% of all European residents currently suffer from CKD to some extent, which is estimated by experts to be about 50 million people living in the EU. This figure increases every year. If the current trend does not change, the number of people with CKD may double over the next decade [1, 12, 16].

The costs associated with kidney failure are four times higher than the costs that patients can recover. Treatment of CKD is a serious financial burden on patients, the health care system, and society [2, 20,21]. At present, there is no doubt that specific mechanisms due to the non-mediated nature

of the disease completely determine the course of CKD only in the initial stage, while the reduction of the number of intact nephrons initiates a cascade of pathologic processes universal for nephropathies (such as hyperfiltration, hypercoagulation, violation of renal protein transport, elimination of expression mediators of cell damage), culminating in the formation of nephrofibrosis, often even if the cause that caused the initial damage to the nephrons is eliminated [5,15,8,24].

Purpose of research. The purpose of the research is to evaluate the effect of allthromboparin on the functional state of the kidneys while treating the patients with chronic kidney disease with antiplatelet agents.

Materials and methods of research. The study has been conducted at the Department of Nephrology of the multidisciplinary hospital of the Tashkent Medical Academy during 2018 -2019, where the patients with chronic kidney disease of II-III degree of diabetic etiology were treated. The total number of patients was 105. The controlled patients were divided into two groups with different conditions. The main (first) group (group A) included 55 patients, and these patients were recommended allthromboparin at a dose of 200 mg/day as antiplatelet therapy in combination with conventional therapy. The average age of patients in the main group is 43.0±1.65 years. Control group 2 (group B) included 50 patients who were prescribed dipyridamole at a dose of 225mg/day as an antiplatelet treatment regimen in combination with traditional therapy. The average age of patients in this group is 44.3±2.4 years. The study patient by age and gender is presented in the Table 1.

Table 1.: **Division of the patients by age group and gender**

№	Gender	First group (A group)	Second group (B group)	P
1.	Women	24 (43,6%)	22 (44%)	>0,05
2.	Men	41(56,4%)	28 (56%)	>0,05

As can be seen from the Table 1, 24 (43.6%) patients in the main group were women, 41 (56.4%) were men, 22 (44%) of women in the control group, and 28 (56%) of men. Chronic kidney disease of the patients of two groups was caused by some diseases with diabetic etiology as a complication. The table below shows the proportion of major diseases in both groups caused by CKD (Table 2).

Table 2.: **Interconnection of the main diseases caused by CKD in control groups**

№	Disease	First group (A group)	Second group (B group)	P
1.	Chronic glomerulonephritis	39 (50%)	27(49,1%)	>0,05
2.	Chronic pyelonephritis	5 (24%)	14(25,4%)	>0,05
3.	Systemic lupus erythematosus	2 (12%)	5(9,1%)	>0,005
4.	Chronic tubulointerstitial nephritis	3 (8%)	5 (9,1%)	>0,05
5.	Renal amyloidosis	1 (6%)	4 (7,3%)	>0,05

In all patients, laboratory and instrumental studies were performed on the first day of the treatment procedure and during which the treatment was performed, i.e. on the 10th day. In order to determine the effectiveness of the treatment regimen in all patients, the amount of urea, creatinine, cholesterol, and total protein in the blood was evaluated in comparison with the standard levels.

At a later stage of the study, laboratory tests were performed, such as biochemical analysis, general blood analysis, platelet aggregation, and coagulogram. The formula "CKD-EPI" was used in determining the glomerular filtration rate, which determines the functional state of the kidneys. The Russian-made BIOLA "Alat-2 aggregation analyzer" was used to evaluate platelet aggregation. In both groups examined, patient complaints were collected on the first day of treatment before antiplatelet therapy and on the tenth day of treatment.

The practical application package of the computer "Statistica for Windows 7.0" was used for statistical processing of the research results.

Analysis of the results obtained. There was a decrease in patients' complaints of discomfort on the tenth day compared to the first day (Table 3).

Table 3: Results of a comparative study of improvement of clinical signs in patients of the control group

№	Complain	Control group n=20		1st-group (Alltrombosepin) (n=55)				1st-group (Curantyl) (n=50)			
				1 st day		10 th day		1 st day		day	
		aбс.	%	aбс.	%	aбс.	%	aбс.	%	aбс.	%
1.	Asthenia	2	10,0	49	89,1	42	76,4	48	96,0	41	82,0
2.	Loss of appetite	0	0	48	87,3	40	72,7	44	88,0	37	74,0
3.	Costiveness	1	5,0	28	50,9	19	34,5	23	46,0	15	30,0
4.	Nausea	0	0	24	43,6	16	29,1	22	44,0	14	28,0
5.	Body weight loss	0	0	26	47,3	24	43,6	25	50,0	23	46,0
6.	Dry skin	0	0	37	67,3	30	54,5	35	70,0	29	58,0
7.	Joint pain	0	0	22	40,0	18	32,7	23	46,0	17	34,0
8.	Oedemata	0	0	29	52,7	17	30,9	26	52,0	15	30,0
9.	Nycturia	0	0	33	60,0	25	45,5	31	62,0	22	44,0
10.	Polyuria	0	0	17	30,9	10	18,2	15	30,0	10	20,0
11.	Headache	2	10,0	36	65,5	27	49,1	35	70,0	25	50,0

As can be seen from the Table 3, changes were observed in all patient complaints, which means that both groups achieved good indicators for reducing complaints. Urea, creatinine, total cholesterol, and total protein in the blood of patients were studied in the study of the effect of antiplatelet drugs on the functional state of the kidneys in patients with CKD. Depending on the amount of creatinine in the blood, the functional state of the kidneys was evaluated. Examinations were performed on the first and tenth days of treatment and, for comparison, the results were evaluated (Table 4 and Picture 1).

Table 4.: Dynamics of blood biochemical indicators in all patients in the group. Observations

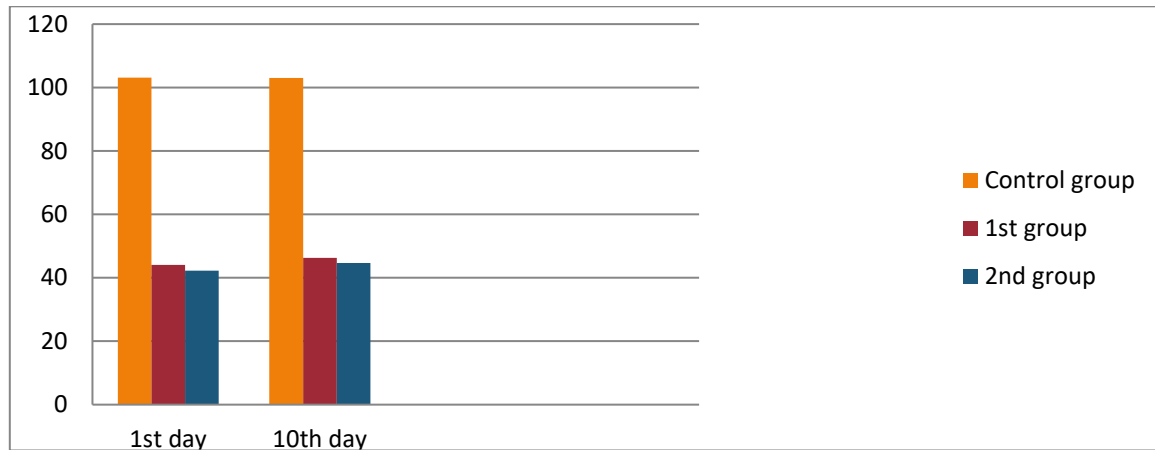
№	Indicators	Control group (n=20)	1 st group (Alltrombosepin) (n=55)		2 nd group (Dipyridamole) (n=50)	
			1 st day	10 th day	1 st day	10 th day
1.	Urea, mmol/l	6,8±0,13	10,5±0,47***	9,5±0,34***	10,1±0,29***	9,34±1,67***
2.	Creatinine mmol/l	71,6±1,62	164,3±11,31** *	155,9±8,5***	159,5±7,89** *	152,1±6,03***
3.	Total cholesterol, mmol/l	4,7±0,08	5,5±1,45	5,1±1,32	5,4±1,43	5,0±1,25
4.	Total protein, g/l	69,6±1,35	63,3±1,68**	66,2±1,39	62,1±1,42***	64,1±1,20**

Notes: * - the differences are significant in relation to the indicators of the control group (**- P<0,01, * * * - P<0,001)

As can be seen from the Table 4, in both groups that participated in the study, the biochemical indicators of blood changed for the better. In particular, in the first group, the urea scale decreased from the 10th day of the study to 9.6% compared to the first day, while in the second group there was a decrease of 7.52%. Moreover, the amount of creatinine in the blood improved by 5.1% on the tenth day compared to the first day in the first group, while in the second group there was an improvement of 4.6%. As can be seen from changes in blood turbidity, it is known that the effectiveness of Allotrombosepine in traditional treatment is higher than that of dipyridamole.

When determining GFR based on biochemical tests, 103.1±4.99 ml / min was observed in the control group, while on the first day of treatment, GFR was equal to 44.1±1.77 * * ml / min in patients

receiving Allotrombosepin in the group 1, on the tenth day of treatment, an increase of $46.3 \pm 2.06^{***}$ ml/min was observed. During the 10-day course of treatment of the disease in this group, there was an improvement in GFR indicators-4.9%. However, in 2 groups of patients who received dipyridamole as antiplatelet therapy, on the first day of treatment, GFR was $42.2 \pm 2.23^{**}$ ml / min, on the tenth day of treatment, this indicator was $44.7 \pm 2.64^{**}$ ml / min. However, in this group, after a 10-day course of treatment, there was an increase in GFR-by 5.9%.As can be seen from these indicators, we can see that from the changes in GFR when we give the drug dipyridamole, used as an antiplatelet treatment in standard treatment, the changes in GFR when the drug Altrombosepin is given are close to each other. Changes in the above GFR are described in the form of a diagram (Table 5).



Notes: * - the differences are significant in relation to the indicators of the control group (**- $P < 0,01$, *** - $P < 0,001$)

Picture 1. Dynamics of GFR changes of the patients of the control group

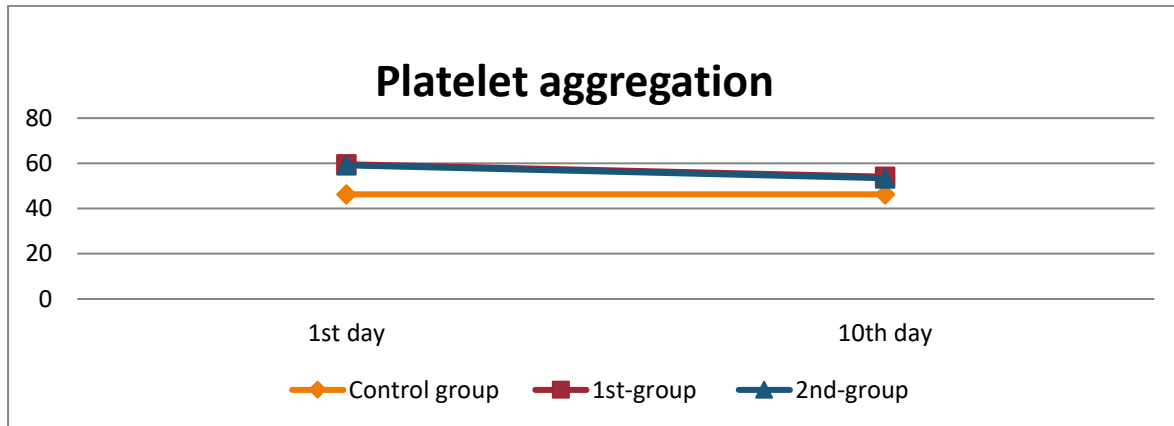
In our case, a general blood test was performed in all control groups. As a result of the tests, it was found, including in the general blood test after a 10-day course of treatment, that hemoglobin was observed in the first group by 2.8% on the tenth day compared to the first day, and in the second group by 3.2% improvement. The number of red blood cells in the first group improved by 2.8% on the tenth day compared to the first day, and in the second group-by 2.7%. In the first group, there was a decrease in the number of chromatids by 3.4%, in the second group-a decrease of 1.1% (Table 5 and Picture 2).

Table 5: Dynamics of changes in the general blood test

№	Indicators of the general blood test	Control group (n=20)	1 st group (Alltrombosepin) (n=55)		2 nd -group (Curantyl) (n=50)	
			1 st day	10 th day	1 st day	10 th day
1	Hemoglobin, g / l	$127,3 \pm 1,89$	$103,3 \pm 2,28^{**}$ *	$106,2 \pm 2,01^{**}$ *	$99,6 \pm 3,54^{***}$	$102,8 \pm 3,21^{***}$
2	Red blood cell, g / l	$4,1 \pm 0,09$	$3,6 \pm 0,066^{***}$	$3,7 \pm 0,06^{***}$	$3,6 \pm 0,09^{***}$	$3,6 \pm 0,08^{**}$ *
3	Leukocyte	$7,1 \pm 0,12$	$7,0 \pm 0,13$	$7,1 \pm 0,12$	$7,5 \pm 0,14^*$	$7,4 \pm 0,13$
4	Platelet, g / l	$228,8 \pm 2,59$	$230,6 \pm 3,77$	$222,7 \pm 2,91$	$221,8 \pm 4,6$	$219,5 \pm 3,58^*$

Notes: * - the differences are significant in relation to the indicators of the control group (**- $P < 0,05$, *** - $P < 0,01$, **** - $P < 0,001$)

In our controlled group aggregation of platelets was one of our main goals of verification.



Picture 2. Results of platelet aggregation in the examined patients

In the first group, spontaneous platelet aggregation improved to $59.6 \pm 1.15^{**}$ on the 10th day of treatment, while on the first day of treatment it was $53.5 \pm 1.10^{**}$. In this group, there was a decrease in platelet aggregation by 10.23%, and in our second group (dipyridamole) there was an improvement of $59.1 \pm 2.1^{**}$ on the first day of treatment, to $53.4 \pm 1.88^{**}$ on the 10th day of treatment. On the tenth day of treatment, there was a decrease of 9.6%. Both groups showed improvement in platelet aggregation.

Conclusion: Based on the changes identified in the analysis, the following conclusions have been made:

1. all patients with chronic kidney disease have changes in the hemostatic system. This leads to a decrease in the functional state of the kidneys and a decrease in GFR.
2. Based on the above changes and the results obtained, it is possible to understand the importance of antiplatelet therapy for patients with chronic kidney disease.
3. when studying the comparative effectiveness of the drug Allthrombosepin produced in the Republic of Uzbekistan with dipyridamole, which is used as an antiplatelet treatment based on modern standards, its effectiveness as an antiplatelet is important because it does not lag behind the results achieved by the drug dipyridamole.

REFERENCES

1. Barskova, E. G., L. R. Giniatullina Medico-social examination of patients with chronic kidney disease // Bulletin of modern clinical medicine. 2012. Vol. 5. No. 1, Pp. 36-39.
2. Vatazin A.V., Shilov E. M., Khoziainova N. Yu. and others. New possibilities for correcting hyperkalemia in patients with chronic kidney disease // Neurology 2016 Volume 26, No. 4, Pp. 47-53.
3. Garcia-Garcia G., Jha V. Chronic kidney disease in unprotected populations // Nephrology. 2015. Volume 19. № 21, Pp. 17-21.
4. Daminov B. T., Abdullaev Sh. S., Egamberdieva D. A. remodeling of the heart in patients with chronic kidney disease of various etiology // Bukovynsky medical Visnik, 2013. Volume 17, No. 4 (68), Pp. 54-58.
5. Dobronravov V. A., Smirnov A. and others. Source name 2009, Pp. 34-39.
6. Ivanov D. D. " Central hemodynamics and drugs of choice in correction hypertension in chronic kidney disease " Kidneys. -2016. - № 1 (15). Pp. 16-21.
7. Kalyuzhin V. V., 2015. Volume 4. Pp. 87-94
8. Kalyuzhin V. V. and others Buliten Siberian medical 2015 volume 14, № 4. Page 87-98
9. Lindina M. L., Shishkin A. N., Volovnikova V. A. " Features intrahepatic hemodynamics in patients with metabolic syndrome" Nephrology. 2015. Volume 19. № 4. Pp. 83-88.

10. Nugmanova A.M., Chingaeva T. N., Dikanbayeva S. A. " Electrolyte disorders in chronic kidney disease " *Clinical Medicine of Kazakhstan*. 2014. S1-1. Pp. 86-88
11. Smirnov A.V., Dobronravov V. A., Rumyantsev A. Sh., " National recommendations. Acute kidney injury: Basic principles of diagnosis, prevention and therapy". *Nephrology* 2016 Volume 20 № 1 Pp. 79-104.
12. Khudyakova N. V., Bezzubova T. G. and others. "Evaluation of the hemostatic system and fat, associated with hypercoagulation... " *Nephrology* 2017 Volume 21 № 1 Pp. 26-33.
13. Shutov A. M. Title and source journal of clinical medicine 2014, № 5 Wed 5-10
14. Anonymous. Part 1. Executive summary // *Am. J. Kidney Dis.* 2002. Vol.39, Suppl. – Pp.17-31.
15. Agarwal R., Light R.P. Median intradialytic blood pressure can track changes evoked by probing dry-weight. 2009;4:1925–1931.
16. EKHA European Kidney Health Alliance Rebollo-Rubio A.2015,
17. Kidney disease in persons with undiagnosed or prehypertension in the United States. *Hypertension*.2010; 55: 1102—9.
18. Shahinian V.B., Hedgeman E., Gillespie B.W. CDC CKD Surveillance System.
19. Estimating prevalence of CKD stages 3-5 using health system data. *Am. J. Kidney Dis.* 2013; 61: 930-8.
20. Schoolwerth A.C. et al., Chronic Kidney Disease: A Public Health Problem That Needs a Public Health Action Plan, Preventing Chronic Disease –Public Health Research, Practice, and Policy (2006); 3(2): 1-6.
21. Shishkin A.N., Lyndina M.L. Endothelial dysfunction, metabolic syndromicroalbuminuria. *Nephrology* 2009; 13(3): 24-32 [Shishkin A.N., Lyndina M.L. Endotelialnaya disfunktsiya, metabolicheskiy sindrom I mikroalbuminuriya. *Nefrologiya* 2009; 13(3): 24-32]
22. Palaniappan L, Carnethon M, Fortmann SP. Association between microalbuminuria and the metabolic syndrome: NHANES III. *Am J Hypertension* 2003; 16 (11 Pt 1): 952-958.
23. Pugsley D., Norris K.C., Garcia-Garcia G., Agodoa L. Global approaches for understanding the disproportionate burden of chronic kidney disease // *Ethn Dis.* – 2009. – Vol.19
24. Crews D.C., Charles R.F., Evans M.K., Zonderman A.B., Powe N.R. Poverty, race, and CKD in a racially and socioeconomically diverse urban population // *Am J Kidney Dis.* – 2010. – Vol. 55. – P. 992–1000.
25. Garcia Garcia G., Harden P.N., Chapman J.R.. World Kidney Day 2012. The Global role of kidney transplantation // *The Lancet.* – 2012. – Vol. 379. – P. e36–e38.
26. Jha V. Current status of end-stage renal disease care in India and Pakistan // *Kidney Int Supplements.* – 2013. – Vol. 3. – P. 157–160.